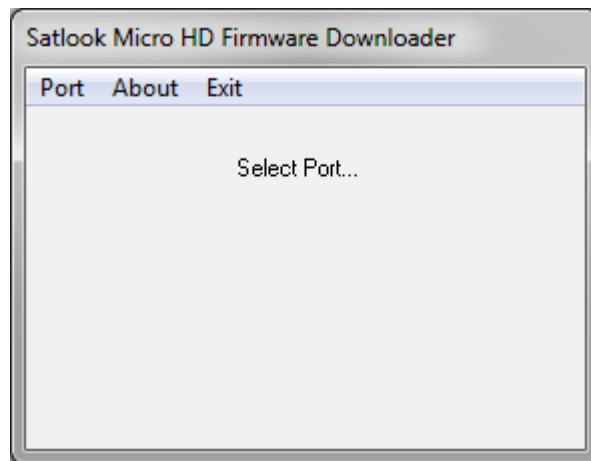


Loading New Firmware

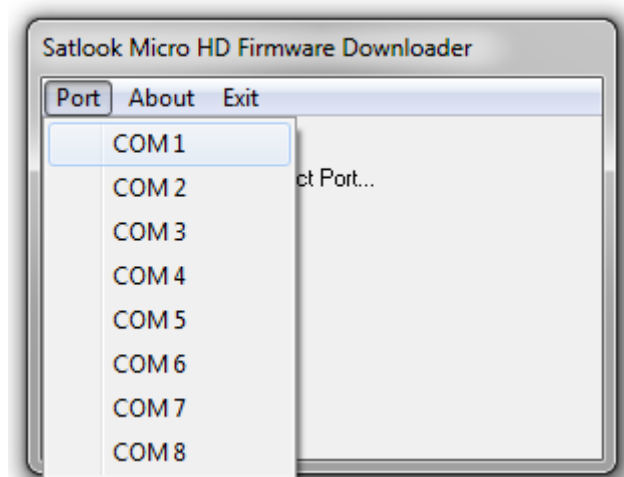
A new firmware version can be loaded to correct issues that are reported in the firmware release notes. The firmware for the Satlook Micro HD is identified as “smG2HD-204-EU.hex” with the number “204” being the version number. The Satlook Micro HD with the color display must use version 204 or higher. Version 204 is compatible with older Satlook Micro HD or G2 hardware. Do not load any firmware without this type of name, it will be for a different instrument and will not work on the Satlook G2 or HD. Use the Version screen in the Setup Menu to determine the current software version.

In order to load firmware, you must have a USB to RS232 cable. The USB to RS232 cable is supplied with the Satlook Micro HD. The firmware loading must be performed with the external charger connected.

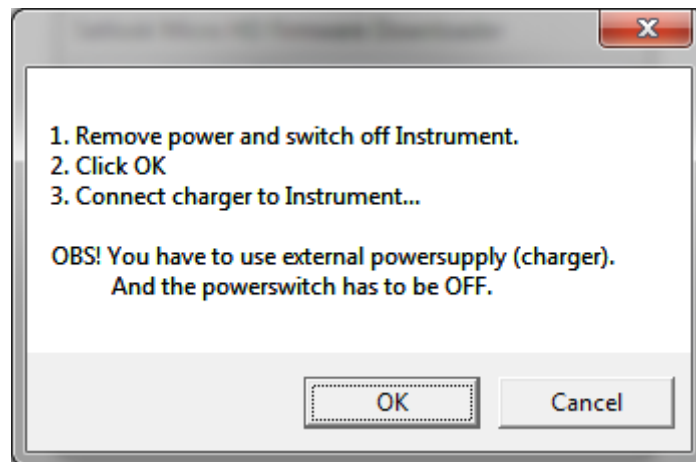
1. Connect the Rs232 cable from the computer to the Satlook Micro HD.
2. Run the firmware download file “FDL.exe”.



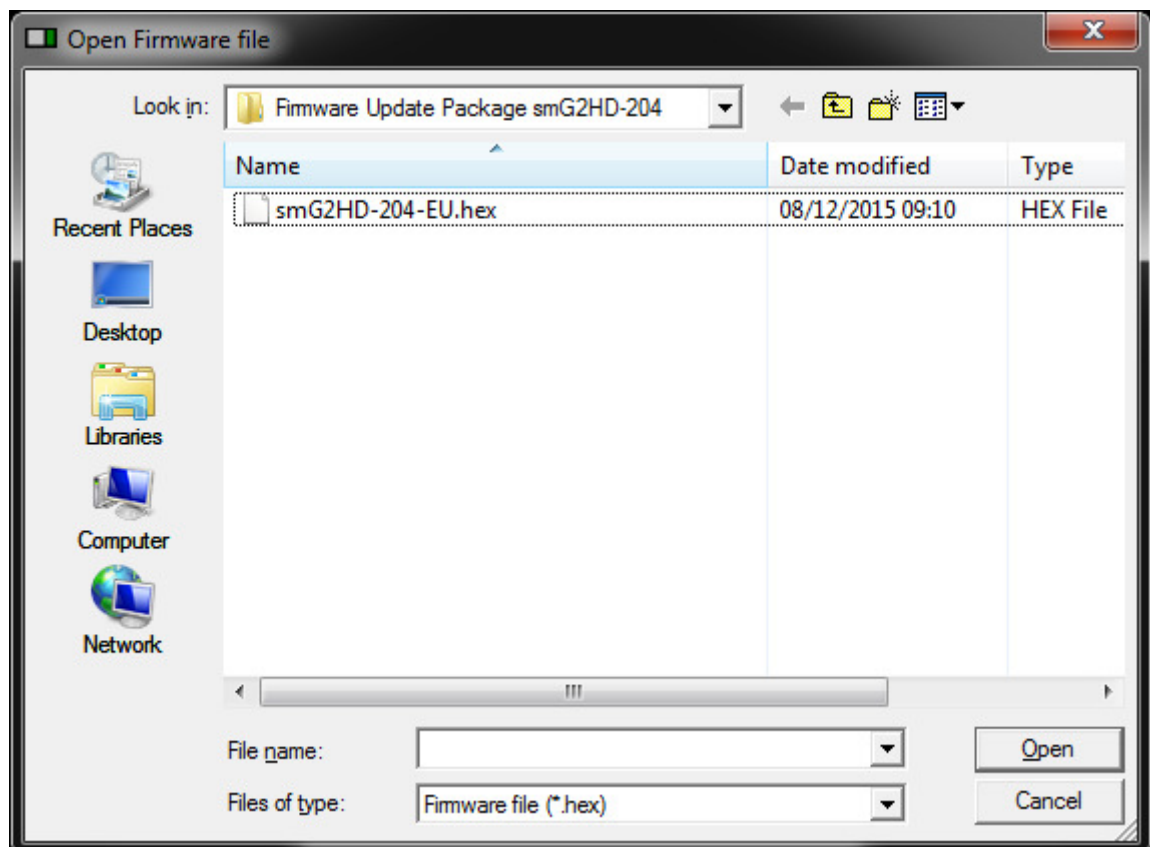
Select the RS232 port on the computer. Normally, the port is COM1 but Windows may assign another port. To find or change the port, right click Computer, then Select Properties/ Device Manager/Ports/USB-SERIAL. Under Port Settings/Advanced the current port can be viewed or changed.



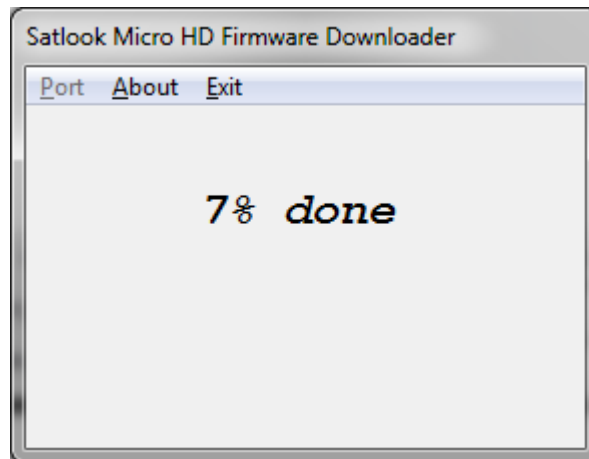
3. Select "Send Satlook Firmware" (the other functions are for a different instrument.)



4. Select "OK" and the computer display will be "Searching".
5. Connect the external charger and now the firmware file to be downloaded can be selected.



6. During the download, the progress is shown.



7. When complete, the Satlook Micro HD will restart, enter the Charging mode and the computer display will show that the download completed.

