

# Satlook Lite

## USER MANUAL



# Contents

<b>Satlook Lite - Description . . . . .</b>	<b>page 3</b>
<b>Getting Started . . . . .</b>	<b>page 4</b>
Power On/Off	
Power Supply and Battery	
How to use the meter	
<b>Menu . . . . .</b>	<b>page 6</b>
Satellite Search	
Satellite Scan	
Spectrum	
Send DiSEqC	
Beeper On / Off	
Favorites	
LNB Setup Menu	
Setup	
 Appendix A – Using LiteEdit to Edit Satellites . . . . .	 page 9
Appendix B – Using LiteEdit to Load Firmware . . . . .	page 11
Appendix C – LNB Type Description . . . . .	page 13
Appendix D – DiSEqC Description . . . . .	page 16
Appendix E – DVB-S Description . . . . .	page 17
Appendix F – Technical Specification . . . . .	page 18

(Updated: July 4, 2012)

## **Satlook Lite – Description**

Emitor's Satlook Lite is developed in Sweden for exact alignment and adjustment of satellite dishes. It is designed to be extremely easy to use. Simply select the satellite you want to find or install and the meter will try to identify only that satellite. When finding the satellite the meter will show exact digital readouts for SNR and Quality in order to get a perfect result of the installation.

The Satlook Lite is microprocessor controlled, making it very reliable and accurate. Signal strength is presented on the LCD-display.

The meter searches for one satellite at a time in "Satellite Search" mode. You can also choose to view the signal in spectrum mode.

The Satlook Lite is very sensitive and can detect even the weakest signals. The instrument can supply Voltage (13/18/21 Volt), 22 kHz and DiSEqC for direct connection to LNBs. The meter is short-circuit protected by an automatic current sensing circuit and the battery is protected from an Over Temperature condition.

The Satlook Lite is charged via an external DC power-source of 12 volt, 1.2 amp. It operates with a rechargeable battery pack. The unit will operate for about one hour with fully charged batteries.

# Getting Started

## Power ON/OFF

To turn the unit ON, simply push and press down the OK button for two seconds.

**NOTICE:** The unit will start loading firmware which takes about 10 seconds. The unit will "beep" in a steady pace and the LCD back-light will be lit during start-up. The unit starts in **Easy Find** mode on the last selected satellite position.

To turn the unit OFF, push and hold down the **OK** button for two seconds.

## Power supply and battery

The Satlook Lite can be operated by an external power-supply through the VDC port, using an external power-source (12v dc, max 1.2A). Connect the power-source and hold down the ON button until the unit turns On. To turn the unit OFF when the unit is fed by an external power-supply, simply disconnect the power-source.

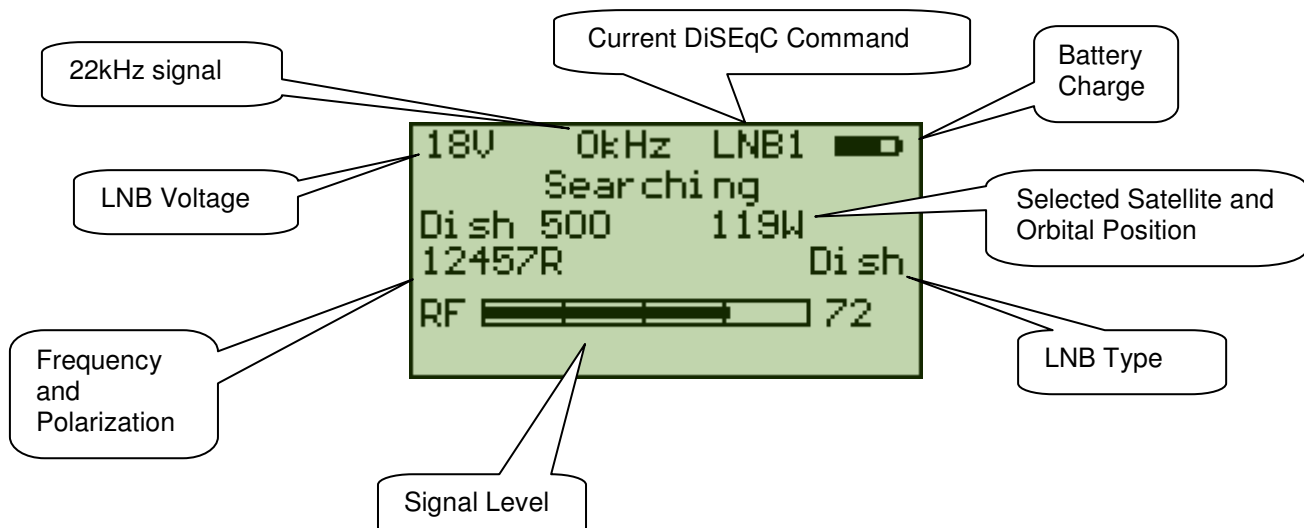
Discharged batteries take about 12 hours to fully recharge. The recharging is controlled by the units microprocessor and is indicated on the display. Please notice that to obtain full capacity of new batteries it is necessary to fully charge and fully discharge the battery-pack several times.

The meter has a rechargeable NiMe battery pack in the battery-compartment. Apart from recharging the battery the unit does not need any particular maintenance. The unit should be recharged when the battery is empty (indicated with a battery-indicator symbol on the display). A fully charged battery is operational for about an hour depending on the external LNB load.

## How to use the meter

Start by connecting the meter to the LNB of the dish and then turn the meter On. (The LNB setup needs to match the LNB in use – see page 8)

The instrument starts in the "Satellite Search" mode which makes it easy to detect the satellite desired. The instrument has a preset list of satellites which can be selected by using the Up/Down buttons. When a satellite is displayed, the meter immediately starts to search for that satellite.



The signal level will increase on the signal bar if any satellite signal is detected. If the beeper is enabled, then the pitch of the beeper will increase with signal strength. Once the instrument locks on a satellite transponder, the display is changed. Once locked on a transponder, the SNR (signal to noise ratio) bar and the Quality bar (derived from BER - bit error rate) are displayed.

When "LOCKED" on a signal, the satellite is confirmed with the MPEG data stream using the TSID and ONID (transport stream ID and Original Network ID) for the chosen transponder



The sequence of steps in locking are:

- "Locked" is displayed and the SNR/Quality bars are shown.
- "Found" is displayed if TSID and ONID from transponder match for the desired satellite.

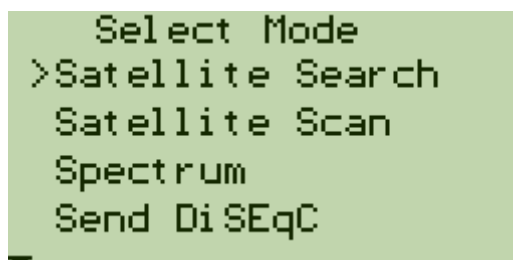
If the ONID and TSID do not match, then "Wrong Satellite" is displayed alternating with the actual ONID and TSID found for this transponder. If the TSID in the satellite file is zero, then a match is made without the TSID. When the ONID and TSID to match from the satellite file are both zero, then the actual ONID and TSID are displayed.



Once the correct satellite is found, then the dish can be "peaked" using the SNR bar and the quality bar for reference. The SNR should be as high as possible, and the Quality measurement should be as high as possible. If the beeper is enabled, when a signal is locked, the pitch of the signal is reporting the SNR.

## Menu

The following menu is shown on the display when pressing down the "**OK**" button in the "Satellite Search" mode:

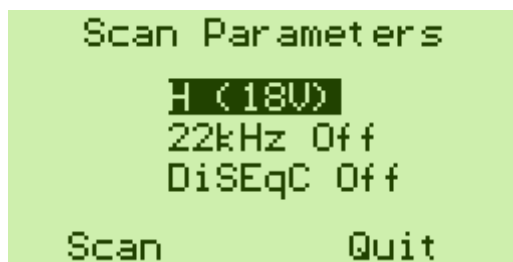


This is the Main Menu. Use the "**UP**"/"**DOWN**" buttons to scroll up and down in the menu system. Use the "OK" button to choose the selected function.

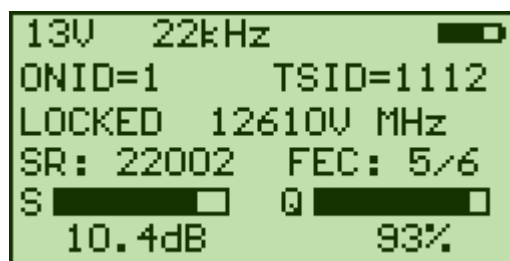
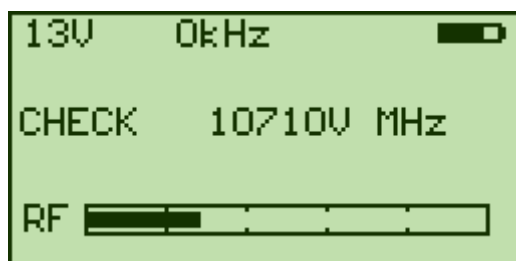
Pressing the "OK" button when the arrow ">" is pointing towards "**Satellite Search**" will return to the "Satellite Search" mode. In this mode, the satellite to be used can be selected by pressing Up/Down.

## Satellite Scan

When the Satellite Scan function starts, the "**UP**"/"**DOWN**" buttons select the parameter to change and the "**OK**" button changes the parameter (or starts the scan or exits).



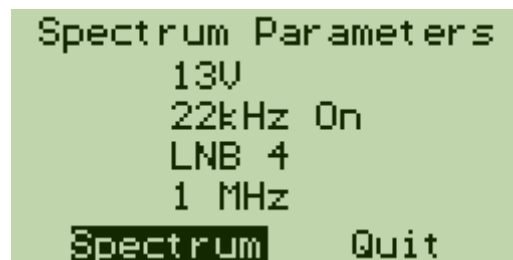
This function searches for a DVB-S signal every 10Mhz. It starts at the lowest frequency for the LNB type (10670MHz for Universal) and samples every 10MHz until a signal is detected. The "**UP**"/"**DOWN**" buttons select the direction of the search.



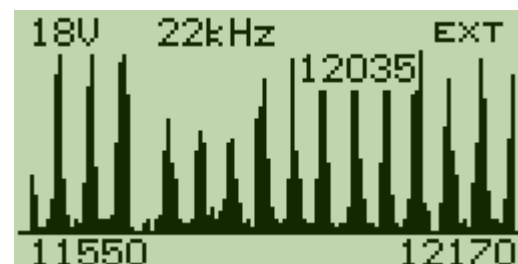
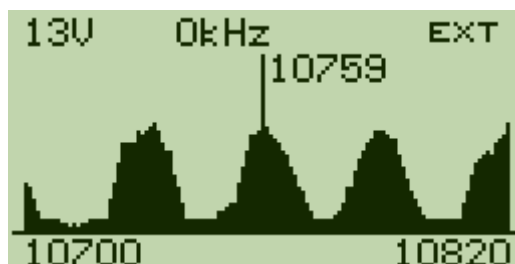
As each frequency is checked, the RF value is shown. When a DVB-S signal has locked, the display changes to show the Symbol Rate and FEC. When the NIT information is available, it is also shown. (ONID is "Original Network ID", and TSID is "Transport Stream ID")

## Spectrum

Pressing the "OK" button when the arrow ">" is pointing towards "**Spectrum**" displays the Spectrum Parameters screen.



The "Up" and "Down" buttons select the settings of the LNB Voltage, 22kHz signal, and DiSEqC, and the Spectrum bandwidth and the "OK" button changes the setting. Pressing "OK" when "Spectrum" is highlighted will display the spectrum.



The frequency step size can be set to 1MHz or 4MHz, which gives a bandwidth of 120MHz or 480MHz.

The start and stop frequencies are shown at the bottom of the screen. These are adjusted for the current LNB type that is selected from the LNB Menu.

When the spectrum is displayed, pressing the "Up" and "Down" buttons will change the cursor frequency up or down. The cursor frequency is indicated beside the cursor and can be used to determine a peak.

If the "OK" button is pressed and held for more than one half second, then the signal at the cursor frequency is analyzed using the Satellite Scan routine. If this is a valid DVB-S signal, then it is locked and the signal parameters are shown. If the signal cannot be locked, the scanning will start at the frequency plus 10MHz. (If the "OK" button is pressed for two seconds, then the unit will power off.) Pressing the "OK" button normally when the spectrum is displayed, will return to the Spectrum Parameters screen.

When using the LNB type "DishPro" the LNB voltage is always 18V and the R and L polarization are used to choose the lower or upper portion of the IF band.

## Send DiSEqC

Pressing "OK" when the arrow ">" is pointing to "**Send DiSEqC**" will enter the selection menu where the DiSEqC commands LNB1, LNB2, LNB3, LNB4 can be sent. When you select one of the LNB commands, it is sent at the next tuning. The Satellite Search satellite selected may have a DiSEqC command already selected. When you send a different command with "Send DiSEqC" it will replace the DiSEqC for the Satellite Search satellite temporarily. If the Satellite Search satellite is changed, then any new DiSEqC command for the new satellite will be used. This command can also be used for the Search function. (When the selection is "NONE", no DiSEqC command is sent, however the LNB voltage is turned off to ensure that the last DiSEqC command sent will not be active.

## Beeper

Pressing "OK" when the arrow ">" is pointing to "**Beeper ON/OFF**" will either turn the BEEPER ON or OFF. The beeper is on by default and can be used for an audible indication when watching the display is not practical.

## Favorites

Pressing "OK" when the arrow ">" is pointing to "**Favorites**" will allow the satellites to be used chosen from the available satellites. The satellites used in Satellite Search mode show an asterisk after the satellite name. Press "OK" to either add or remove a satellite from the Satellite Search list. For saving, select "Save and Exit" and this setting will be restored on power on. Normally, the Favorites list will be a small selection of satellites from the satellite list.

## LNB Setup Menu

Pressing "OK" when the arrow ">" is pointing to "**LNB Setup Menu**" will allow selection of the LNB type. Normally the LNB Type is automatically set by the satellite selected and is shown on the display. If the LNB Setup menu is used to change the LNB type, then this LNB will be used in all further operations until power off. LNB type details are shown in Appendix C. When the LNB type is selected, then select "Save and Exit".

If a Satellite is selected that is not compatible with the LNB type (for instance a C Band LNB and Ku Band Satellite frequency), then a message "Check LNB setting!" is displayed.

## Setup

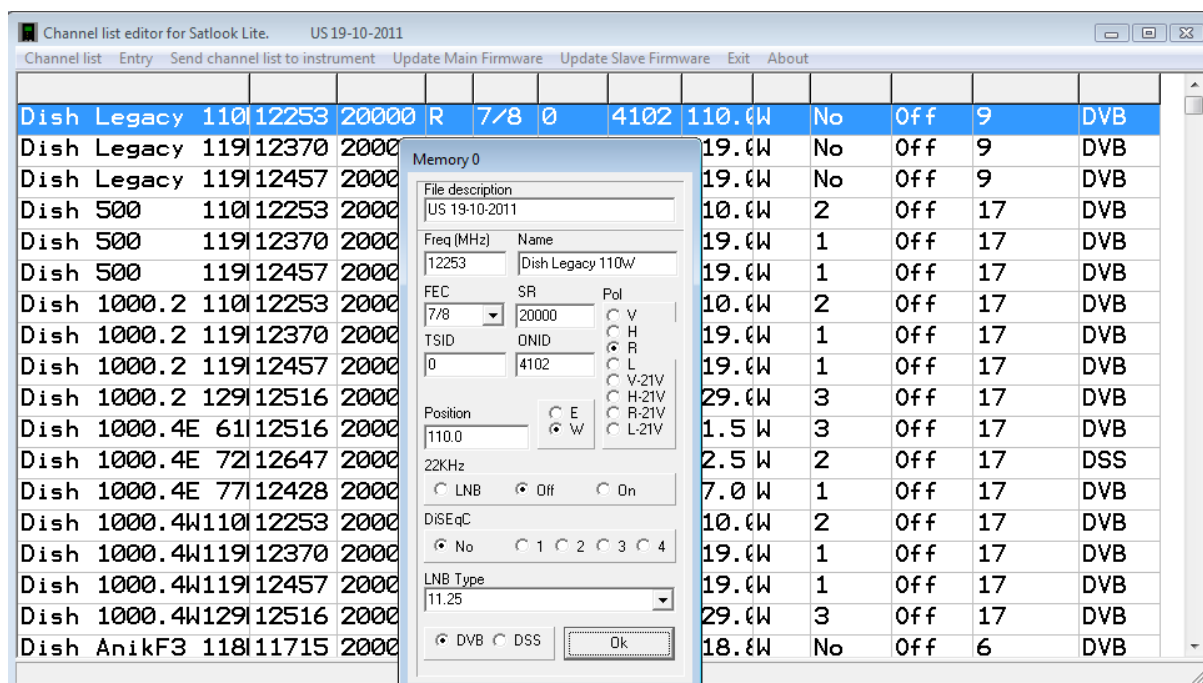
Pressing "OK" when the arrow ">" is pointing towards "**Setup**" will enter the setup mode. In setup mode these parameters can be adjusted. These settings will be restored on power on.

- **Language:** English, Spanish, French, German, Portuguese and Swedish
- **Auto power off:** 1 min, 2 min, 5 min, 10 min, 30 min and always on.
- **LCD backlight:** On or Off.
- **LCD Contrast:** Lighter or Darker.
- **Info:** Shows software version, Satlist version loaded, battery power, etc.



## Appendix A – Using LiteEdit to Edit Satellites

The Satellite list (satlist) stored in the Satlook Lite can be changed using the LiteEdit program. Use “Channel List > Open” to load a satellite list to edit.



Clicking on a name allows editing the details for this entry. The “File description” entry is displayed on the Setup > Info screen of the Satlook Lite, and can be used to verify what satellite list is loaded on the Satlook Lite. It can be edited from any entry, although there is only one “File description”.

A new entry can be added, or an existing entry can be deleted by clicking on the name to select the entry and then using Entry > Insert or Entry > Delete. The Insert/Delete keys can also be used.

When entering a frequency to identify a satellite, if the ONID and TSID are not known, enter 0 and instead of “Wrong Satellite”, the actual ONID and TSID are displayed.

For DirecTV transponders using DSS instead of DVB, no MPEG data is read and identification is confirmed by locking on the Satellite list frequency. These frequencies are chosen so that locking on other satellites is not likely.

The “satlist.lst” files are stored as \*.csv files. A typical file starts like:

```
"VERSION";2;"US 19-10-2011";;;;;;;;;;
"DVB";"Dish Legacy 110W";12253;2;20000;5;0;0;4102;"W";1100;72
"DVB";"Dish Legacy 119W";12370;2;20000;5;0;0;4100;"W";1190;72
"DVB";"Dish Legacy 119W";12457;2;20000;5;0;0;4100;"W";1190;72
"DVB";"Dish 500 110W";12253;2;20000;5;0;0;4102;"W";1100;138
"DVB";"Dish 500 119W";12370;2;20000;5;0;0;4100;"W";1190;137
```

The details for each line are:

DVB/DSS: Transponder DVB encoding or DSS (DirecTV) encoding

(Stored in \*.csv file as: "DVB" or "DSS")

Name: Satellite Name (up to 16 characters)

Freq: Transponder Frequency in MHz

SR: Transponder Symbol Rate in ksym/sec

Pol: Polarization and LNB Voltage

(Stored in file as 0 =V-13V, 1=H-18V, 2=R-13V, 3=L-18V, 4 =V-21V, 5=H-21V, 6=R-21V, 7=L-21V)

FEC: Transponder FEC 1/2, 2/3 etc.

(Stored in the file as 0=1/2, 1 = 2/3, 2=3/4, 3=5/6 4=6/7, 5=7/8)

22kHz: Should the 22kHz signal be on

(Stored in file as 0=off and 1=on)

TSID: Transponder Transport Stream ID transmitted in Network Identification Table

ONID: Transponder Original Network ID transmitted in Network Identification Table

(if the TSID and ONID are both 0, then when a transponder locks, the TSID and ONID will be displayed instead of "Wrong Satellite")

Pos: Satellite Position in Degrees and tenths

(stored in file as X 10 )

E/W: Satellite position as East/West

(Stored in file as "E" or "W")

DiSEqC:

lower 3 bits 0=off, 1=LNB1, 2=LNB2, 3=LNB3, 4=LNB4 If a DiSEqC command is required for tuning, this can be added to the satlist file instead of manual selection.

Upper 5 bits: This defines the LNB to use for this selection. (See Appendix C for LNB conversion details)

0 = Universal

1 = 9.75

2= 10.0

3= 10.05

4= 10.6

5 = 10.7

6 = 10.75

7 = 11.0

8 = 11.2

9 = 11.25

10 = 11.3

11 = 11.475

12 = 10.7 Universal

13 = 5.15 C Band

14 = 5.95 C Band

15 = IF (no conversion from received to displayed frequency)

16 = DirecTV

17 = DishPro

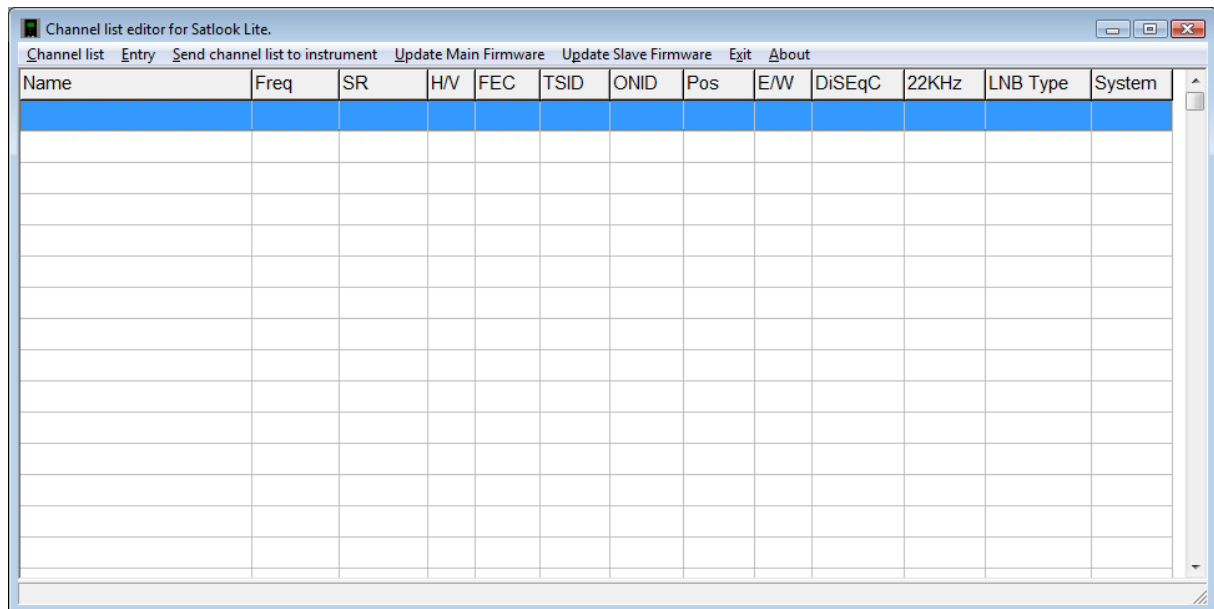
18 = DTV SL3 SWM

19 = DTV SL5 SWM

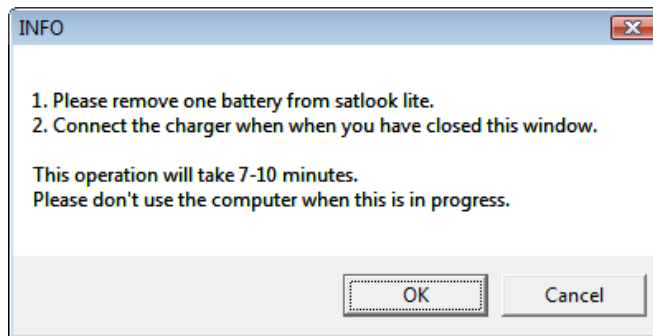
## Appendix B – Using LiteEdit to Load Firmware

LiteEdit is the utility used for updating the firmware on the Satlook Lite. You can check the installed firmware version using the Info menu which will show the current version. In order to load firmware, you must have a Windows PC which supports an RS232 connection. The RS232 cable to be used is supplied as part of the kit with the Satlook Lite. Most laptops do not have an RS232 connection, but a USB to RS232 adapter can be purchased at low cost. Connect the RS232 cable from the computer to the instrument.

- Unpack the Upgrade files and move them to a directory such as: C:\temp that does not contain long filenames. The slave processor update will not work with long filenames in the path.
- Run the “LiteEdit” application included in this firmware package.



- Use the “Update Main Firmware” menu item to select a COM port. Select the RS232 port on the computer. Normally, the port is COM1 but some USB to RS232 converters will use some other port. If desirable, this USB to RS232 conversion device can be made to always use COM1 by clicking Control Panel / Device Manager / Ports and in the Advanced settings for the adapter set to COM1. When the COM port has been selected, LiteEdit will prompt you to select the firmware upgrade file.
- Select the file “Satlook Lite firmware version SLxx-US.bin”. Remove one battery from the Satlook Lite, Click “OK” on the message window and connect the charger cable to begin the download. As the file is transferred, the progress is shown at the lower left corner of the window. It is recommended that no other applications are used during the download. Small timeout delays can cause a failed upgrade and you will need to repeat the loading steps.



Wait until the message "Flashing the new firmware..." is cleared, showing that the firmware flashing is complete.

Unplug the Satlook Lite and plug in again to restart.

Press "OK", "UP", "OK", "UP", "OK" on the Satlook Lite to display the menu and check the firmware version shown on the "Info" screen to make sure that "SW version: SLxx-US" has updated correctly.

If the Slave Processor needs updating:

Turn the Satlook on, and update the Slave Firmware by using the "Update Slave Firmware" menu item to select a COM port. Select the upgrade file: "Slave Processor SLxxx.hex". Use the "Info" menu to verify that "FW version: x.xx" has updated correctly.

## Appendix C – LNB Type Description

There are several bands used for satellite transmission in use worldwide. In Europe, Ku band is predominantly used with some C band usage. In the US, C band, Ku band and Ka are used. The Ku band in US is divided into DBS (Direct Broadcast Satellite) and FSS (Fixed Satellite Service) bands. The satellite transmission bands are:

Europe Ku band: 10.7 GHz – 12.75GHz

US C band: 3GHz – 4.5GHz

US DBS band: 12.2GHz – 12.7GHz

US FSS 11.7GHz – 12.2GHz

US Ka: 18.3GHz – 18.8GHz and 19.7GHz – 20.2GHz

Because the losses in coax are quite high for these frequencies, the satellite signal is first downconverted to a more manageable 950 MHz to 2150 MHz by the LNB for transmission from the dish to the receiver. This is called the IF (intermediate frequency) or also the L Band. The legacy LNB types do a straight conversion using a LO (local oscillator) which is mixed with the incoming signal. This gives a sum and a difference frequency. Where the LO frequency is below the incoming frequency, this results in:  $\text{Freq}_{\text{satellite}} - \text{Freq}_{\text{LO}} = \text{Freq}_{\text{receiver}}$ . This is the normal case. In C Band, however, the LO frequency is above the incoming frequency so:  $\text{Freq}_{\text{LO}} - \text{Freq}_{\text{satellite}} = \text{Freq}_{\text{receiver}}$

Satellite signals are transmitted as polarized waves so that the spectrum can be used to maximum advantage. Signals can have Vertical, Horizontal, Right circular or Left circular polarization. Most LNBs can switch between V/H or R/L using voltage switching of 13V or 18V. The conventions are:

13V = V or R

18V = H or L

The legacy LNBs supported are:

9.75, 10.0, 10.05, 10.6, 10.7, 10.75, 11.0, 11.2, 11.25, 11.3, 11.475

In the US, the legacy LNB for DBS is 11.25 and for FSS is 10.75.

The  $\text{Freq}_{\text{receiver}}$  for each is given by:  $\text{Freq}_{\text{satellite}} - \text{Freq}_{\text{LO}}$

Normal polarization switching is used: 13V = V or R, 18V=H or L

There are two C band LNBs. The C band standard is 5.15GHz, but 5.95GHz is also used. Normal polarization switching is used: 13V = V or R, 18V=H or L

The “IF” LNB is “pass thru” – No conversion is performed.

It is important to remember that after the LNB does the conversion, the frequency passed into the meter is in the range 950MHz to 2150MHz. The LNB setting in the instrument is used only to make the calculation from Satellite frequency and then tune the instrument.

## US LNB Types

In the DBS band of 12.2GHz to 12.7GHz (Dish and DirecTV) the LO for a basic LNB is 11.25GHz and the LNB uses voltage switching for circular polarization 13V=R and 18V = L.

For the FSS band of 11.7GHz to 12.2GHz the LO for a basic LNB is 10.75GHz and the LNB uses voltage switching for linear polarization 13V=V and 18V=H.

DirecTV multi LNB (for 101W and 119W)

LO = 11.25 13V=R 18V=L

101W = LNB1

119W = LNB2 and 22kHz on

DrTV SL3 (for 99WKa, 101WKu, 103WKa)

LO = 11.25 13V = Right 18V = Left

DrTV SL5 (for 99WKa, 101WKu, 103WKa, 110WKu, 119WKu)

LO = 11.25 13V = Right 18V = Left

If Satellite is 110W LO = 11.5416

DrTV SL3 SWM (for 99WKa, 101WKu, 103WKa)

LNB voltage 21V

IF tuning 1586, 1688, 1790 are assigned to 101W

DrTV SL5 SWM (for 99WKa, 101WKu, 103WKa, 110WKu, 119WKu)

LNB Voltage 21V

IF tuning 1586, 1688, 1790 are assigned to 101W

974, 1076, 1178, 1280, 1382 are assigned to 119W

DishPro

LNB Voltage 18V

For Right polarization,  $IF = \text{Freq}_{\text{Satellite}} - 11.25\text{GHz}$

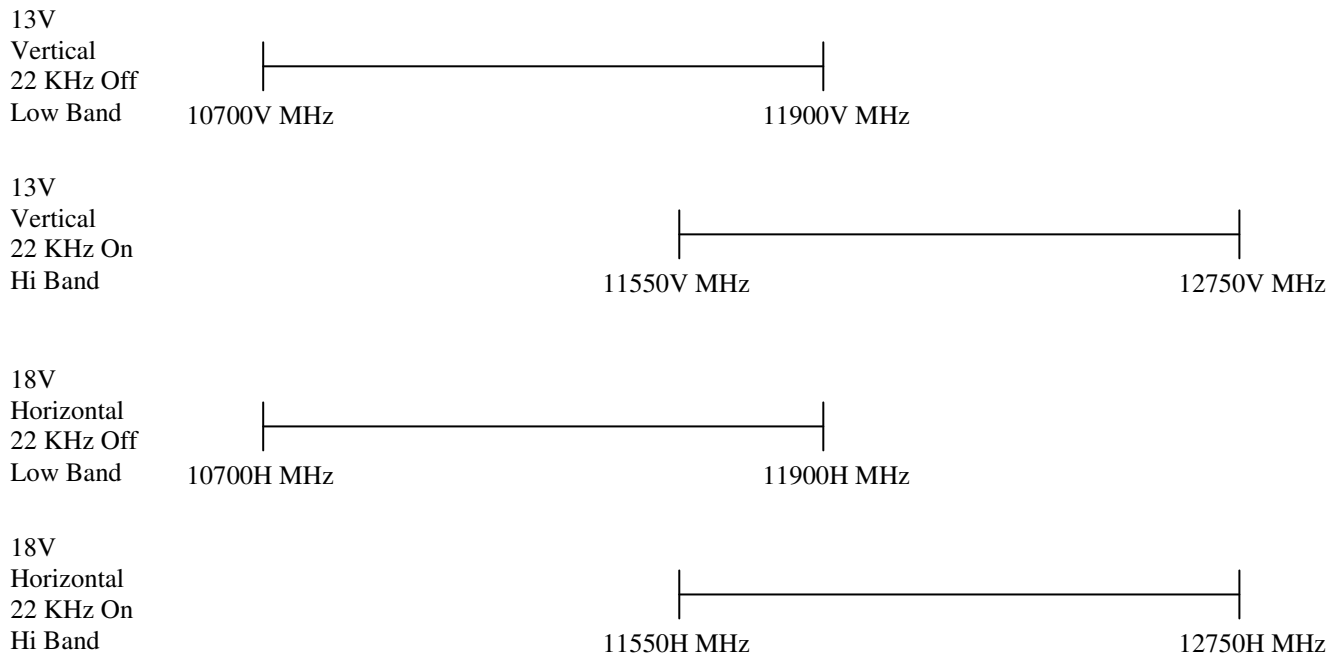
For Left polarization,  $IF = 14.35\text{GHz} - \text{Freq}_{\text{Satellite}}$

## Universal LNB

The Universal LNB can receive either horizontal or vertical polarizations depending on the LNB line voltage. 13V is used to select Vertical polarization and 18V is used to select Horizontal polarization.

The Ku band for satellite reception is 2050 MHz wide (12750 - 10700) while the receiver input is only 1100 MHz wide (2150 – 950). To allow the full reception of the entire Ku band, two different local oscillator (LO) frequencies are used in the Universal LNB. This LO frequency is switched in the Universal LNB by using the 22 KHz tone. When it is off, then the LO frequency used is 9750 MHz and when on, 10600 MHz is used.

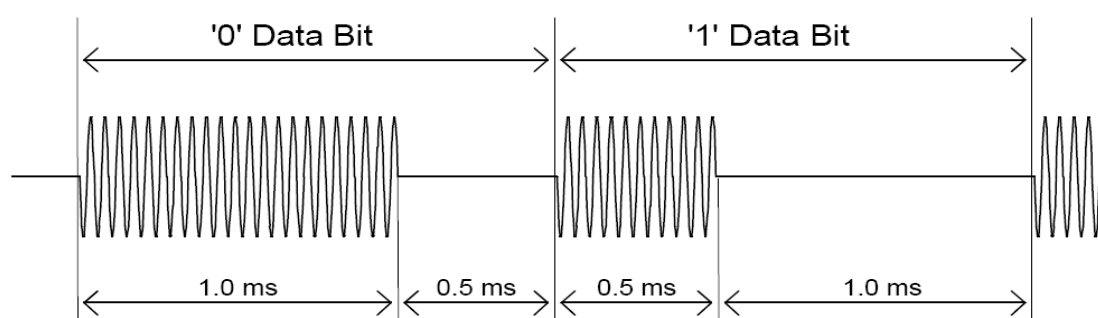
The four frequency ranges for the Universal LNB are sometimes called quadrants and is diagrammed below showing the overlap.



## Appendix D – DiSEqC Description

### **About DiSEqC**

DiSEqC is an acronym for “Digital Satellite Equipment Control” and is achieved using the 22kHz signalling tone. The 22 kHz signal is imposed on the LNB DC voltage of 13V or 18V at a level of 0.65V p-p. Normally, the 22kHz signal is either continuously on or off. When a DiSEqC message is to be sent, if the 22kHz is on, it is turned off for a “quiet period” before the message. Then the DiSEqC message is sent as a series of bytes with an odd parity bit appended. The bits are formed by modulation of the 22kHz signal as shown below.



Most DiSEqC commands are 3 bytes in length but some can be up to 6 bytes long, so the transmission time of a DiSEqC message is on the order of 40 to 80 milliseconds.

### **DiSEqC Commands Supported in Satlook Lite**

LNB1: 0xe0, 0x10, 0x38, 0xc0

LNB2: 0xe0, 0x10, 0x38, 0xc4

LNB3: 0xe0, 0x10, 0x38, 0xc8

LNB4: 0xe0, 0x10, 0x38, 0xcc

For the full DiSEqC specifications, see [http://www.eutelsat.com/satellites/4\\_5\\_5.html](http://www.eutelsat.com/satellites/4_5_5.html))



## Appendix E - DVB-S Description

DVB-S uses phase shift keying to digitally modulate a carrier. Quadrature phase shift keying is used in both and the digital data is encoded as a 90 degree phase shift in the signal. This gives 4 possible states for each sampling interval. The sampling interval is called the Symbol Rate and each state of 2 bits is a Symbol. During transmission, this data is interleaved to allow recovery during noise bursts and redundant data is added called FEC (forward error correction). During reception, the data is re-shuffled to restore the order and the FEC data is used to correct the bitstream as necessary.

This bitstream is called a “transport stream”. A transport stream is made up of packets. All packets are the same length of 188 bytes and they all start with the sync byte 0x47 so that when the data is read, a starting point can be located. Each packet also contains a PID (packet identification). The information in the transport stream consists of several video and audio streams and also SI tables (Service Information) to allow the receiver to decode and display the correct data. There are several types of tables in the SI called PSI data. This table data is generally longer than one packet so several packets are assembled together to make a “section” which can be up to 4096 bytes.

- 1) Program Association Table (PAT): for each service in the multiplex, the PAT indicates the PID of the corresponding Program Map Table (PMT). It also gives the location of the Network Information Table (NIT).
- 2) Program Map Table (PMT): the PMT identifies and indicates the PIDs of the video, audio, and other streams that make up each service.
- 3) Network Information Table (NIT): the NIT gives the Network Number, Name and Satellite Position of the satellite. It also lists all the other transponders on the satellite.
- 4) Service Description Table (SDT): the SDT gives information about each service in this transport stream.

Once these tables are decoded by the receiver, the correct PID for the audio and video streams can be found and presented to the video and audio decoders. In DVB-S, the video streams are presented in MPEG-1 or MPEG-2 encoding (usually MPEG-2) but can be presented in the newer HD format MPEG-4.

(For a more complete understanding, see ISO 13818-1 “Information technology, Generic coding of moving pictures and associated audio information: Systems”)

## Appendix F - Technical specification

- Input frequency: 920-2150MHz
- Input level: 35-100 dBuV
- Input/output impedance: 75 Ohm, F-connector
- Measuring method (Analog):
- RF Signal presentation in thermometer scale.
- Loudspeaker tone changes with signal level when enabled
- Measuring method (Digital):
- Quality (derived from BER - bit error rate)
- SNR (signal/noise-ratio)
- Scales showing max signal and max values
- EasyFind satellite identification: By using the Symbol Rate / FEC in the signal and the ONID/TSID in the transport stream
- Search automatically acquires DVB-S transponders using advanced demodulator to determine FEC and Symbol Rate.
- Spectrum Analyzer 950 MHz to 2150 MHz.
- Backlit 128x64 Pixels LCD.
- PC connection: RS232 with DB9 connector
- LNB Power: 13V or 18V. 21V selectable.
- 22 kHz tone: Standard 22 KHz signal superimposed at 0.65V p-p on LNB-A
- DiSEqC: Yes, according to 1.0.
- Battery: Rechargeable NiMH battery pack.
- Battery Life: About 1 hour on fully charged batteries.
- Weight: About 0.7 kg including batteries.
- Accessories: Orange rubber casing.
- Power-supply of 100-240VAC 12V, 1.2 A
- Car-charger

Made in Sweden by SB Scandinavia AB  
web: [www.emitor.se](http://www.emitor.se)