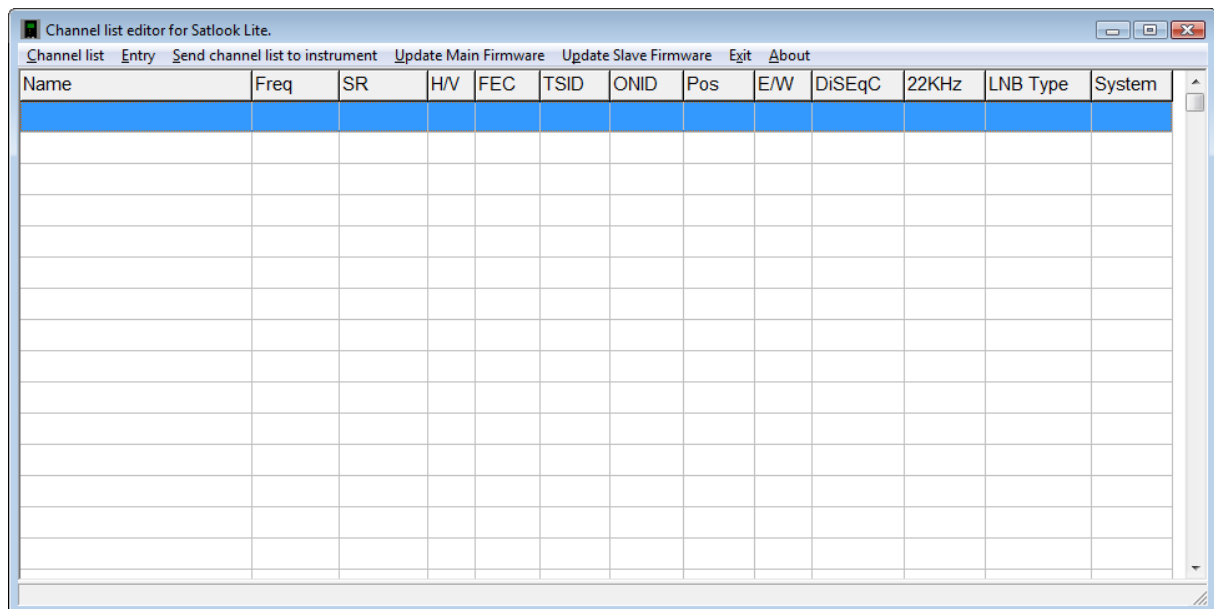


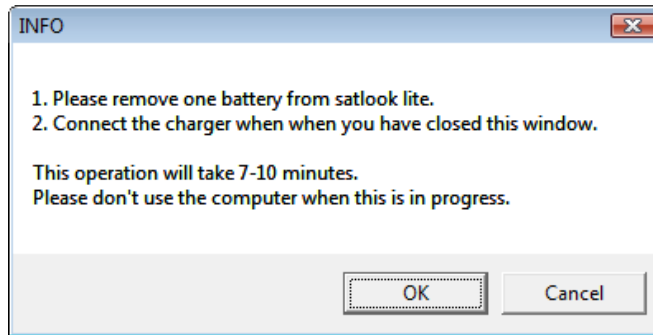
# Satlook Lite Firmware and Satlist Upgrade For Version SL46-US

LiteEdit is the utility used for updating the firmware on the Satlook Lite. You can check the installed firmware version using the Info menu which will show the current version. In order to load firmware, you must have a Windows PC which supports an RS232 connection. The RS232 cable to be used is supplied as part of the kit with the Satlook Lite. Most laptops do not have an RS232 connection, but a USB to RS232 adapter can be purchased at low cost. Connect the RS232 cable from the computer to the instrument.

- Unpack the Upgrade files and move them to a directory such as: C:\temp that does not contain long filenames. **The slave processor update will not work with long filenames in the path.**
- Run the “LiteEdit” application included in this firmware package.



- Use the “Update Main Firmware” menu item to select a COM port. Select the RS232 port on the computer. Normally, the port is COM1 but some USB to RS232 converters will use some other port. If desirable, this USB to RS232 conversion device can be made to always use COM1 by clicking Control Panel / Device Manager / Ports and in the Advanced settings for the adapter set to COM1. When the COM port has been selected, LiteEdit will prompt you to select the firmware upgrade file.
- Select the file “Satlook Lite firmware version SL46-US.bin”. Remove one battery from the Satlook Lite, Click “OK” on the message window and connect the charger cable to begin the download. As the file is transferred, the progress is shown at the lower left corner of the window. It is recommended that no other applications are used during the download. Small timeout delays can cause a failed upgrade and you will need to repeat the loading steps.



Wait until the message “Flashing the new firmware...” is cleared, showing that the firmware flashing is complete.

Unplug the Satlook Lite and plug in again to restart.

Press “OK”, “UP”, “OK”, “UP”, “OK” on the Satlook Lite to display the menu and check the firmware version shown on the “Info” screen to make sure that “SW version: SL46-US” has updated correctly.

Check the “FW version”. If it is not “FW version: 2.40”, then update the Slave Firmware by using the “Update Slave Firmware” menu item to select a COM port. Select the upgrade file: “Slave Processor SL240.hex”. Use the “Info” menu to verify that “FW version: 2.40” has updated correctly.

- Run the “LiteEdit.exe” application to update the satlist file. Use “Channel List - > Open” to load the satlist file “US Satlist 19-6-2012.lst” to the editor and then “Send Channel List to Instrument”. Select the COM port to load.
- The instrument will restart and the firmware and satlist update is now complete.

Channel list editor for Satlook Lite. US 06-19-2012												
Channel list Entry Send channel list to instrument Update Main Firmware Update Slave Firmware Exit About												
Name	Freq	SR	H/V	FEC	TSID	ONID	Pos	E/W	DiSEqC	22KHz	LNB Type	System
Dish Legacy 110W	12253	20000	R	7/8	0	4102	110.0	W	No	Off	9	DVB
Dish Legacy 119W	12370	20000	R	7/8	0	4100	119.0	W	No	Off	9	DVB
Dish Legacy 119W	12457	20000	R	7/8	0	4100	119.0	W	No	Off	9	DVB
Dish 500 110W	12253	20000	R	7/8	0	4102	110.0	W	2	Off	17	DVB
Dish 500 119W	12370	20000	R	7/8	0	4100	119.0	W	1	Off	17	DVB
Dish 500 119W	12457	20000	R	7/8	0	4100	119.0	W	1	Off	17	DVB
Dish 1000.2 110W	12253	20000	R	7/8	0	4102	110.0	W	2	Off	17	DVB
Dish 1000.2 119W	12370	20000	R	7/8	0	4100	119.0	W	1	Off	17	DVB
Dish 1000.2 119W	12457	20000	R	7/8	0	4100	119.0	W	1	Off	17	DVB
Dish 1000.2 129W	12516	20000	R	6/7	0	4104	129.0	W	3	Off	17	DVB
Dish 1000.4E 61W	12516	20000	R	7/8	0	4098	61.5	W	3	Off	17	DVB
Dish 1000.4E 72W	12647	20000	L	6/7	0	0	72.5	W	2	Off	17	DSS
Dish 1000.4E 77W	12428	20000	R	5/6	0	5907	77.0	W	1	Off	17	DVB
Dish 1000.4W110W	12253	20000	R	7/8	0	4102	110.0	W	2	Off	17	DVB
Dish 1000.4W119W	12370	20000	R	7/8	0	4100	119.0	W	1	Off	17	DVB